

Music

John MILES

Sax 2

2 16 11 4 2

Detailed description: This is the first staff of music for Saxophone 2. It begins with a treble clef, a key signature of three flats (B-flat, E-flat, A-flat), and a 4/4 time signature. The staff contains five measures of music, each represented by a solid black bar. Above the staff, rehearsal marks are placed: '2' above the first measure, '16' above the second measure, '11' above the third measure, '4' above the fourth measure, and '2' above the fifth measure. A small musical notation 'J = ♩' is positioned above the '11' rehearsal mark.

36

Detailed description: This staff begins at measure 36. The key signature changes to three sharps (F#, C#, G#). The staff contains five measures of music. Each measure starts with a whole rest, followed by a quarter note with an accent (>) and a fermata. The notes are: G#4, A4, B4, C5, and B4.

40

Detailed description: This staff begins at measure 40. The key signature remains three sharps. The staff contains five measures of music. Each measure starts with a whole rest, followed by a quarter note with an accent (>) and a fermata. The notes are: G#4, A4, B4, C5, and B4.

44

Detailed description: This staff begins at measure 44. The key signature remains three sharps. The staff contains five measures of music. Each measure starts with a whole rest, followed by a quarter note with an accent (>) and a fermata. The notes are: G#4, A4, B4, C5, and B4.

48

Detailed description: This staff begins at measure 48. The key signature remains three sharps. The staff contains five measures of music. Each measure starts with a whole rest, followed by a quarter note with an accent (>) and a fermata. The notes are: G#4, A4, B4, C5, and B4. The final measure contains a half note G#4 with an accent (>) and a fermata.

54

23

Detailed description: This staff begins at measure 54. The key signature remains three sharps. The first measure is a whole rest. The second measure contains a quarter note G#4. The third measure contains a quarter note A4. The fourth measure contains a quarter note B4. The fifth measure contains a quarter note C5. The sixth measure contains a quarter note B4. The seventh measure contains a quarter note A4. The eighth measure contains a quarter note G#4. The ninth measure contains a quarter note F#4. The tenth measure contains a quarter note E4. The eleventh measure contains a quarter note D4. The twelfth measure contains a quarter note C4.

80

Detailed description: This staff begins at measure 80. The key signature remains three sharps. The first measure contains a quarter note G#4. The second measure contains a quarter note A4. The third measure contains a quarter note B4. The fourth measure contains a quarter note C5. The fifth measure contains a quarter note B4. The sixth measure contains a quarter note A4. The seventh measure contains a quarter note G#4. The eighth measure contains a quarter note F#4. The ninth measure contains a quarter note E4. The tenth measure contains a quarter note D4. The eleventh measure contains a quarter note C4.

84

Detailed description: This staff begins at measure 84. The key signature remains three sharps. The first measure contains a half note G#4. The second measure contains a half note A4. The third measure contains a half note B4. The fourth measure contains a half note C5. The fifth measure contains a half note B4. The sixth measure contains a half note A4. The seventh measure contains a half note G#4. The eighth measure contains a half note F#4. The ninth measure contains a half note E4. The tenth measure contains a half note D4. The eleventh measure contains a half note C4.

89

Detailed description: This staff begins at measure 89. The key signature remains three sharps. The first measure contains a quarter note G#4. The second measure contains a quarter note A4. The third measure contains a quarter note B4. The fourth measure contains a quarter note C5. The fifth measure contains a quarter note B4. The sixth measure contains a quarter note A4. The seventh measure contains a quarter note G#4. The eighth measure contains a quarter note F#4. The ninth measure contains a quarter note E4. The tenth measure contains a quarter note D4. The eleventh measure contains a quarter note C4. The twelfth measure contains a quarter note B3. The thirteenth measure contains a quarter note A3. The fourteenth measure contains a quarter note G3. The fifteenth measure contains a quarter note F3. The sixteenth measure contains a quarter note E3. The seventeenth measure contains a quarter note D3. The eighteenth measure contains a quarter note C3. The nineteenth measure contains a quarter note B2. The twentieth measure contains a quarter note A2. The twenty-first measure contains a quarter note G2. The twenty-second measure contains a quarter note F2. The twenty-third measure contains a quarter note E2. The twenty-fourth measure contains a quarter note D2. The twenty-fifth measure contains a quarter note C2.

93



105



109



113



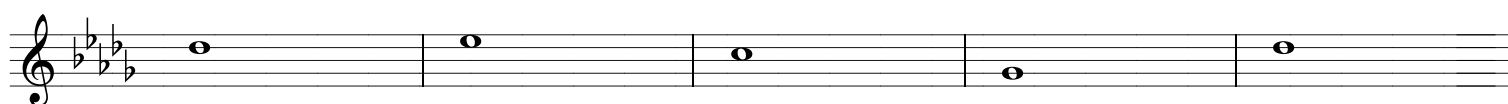
117



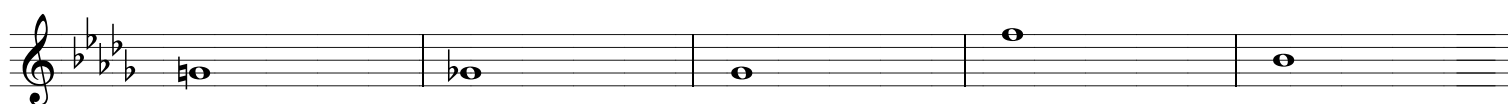
121



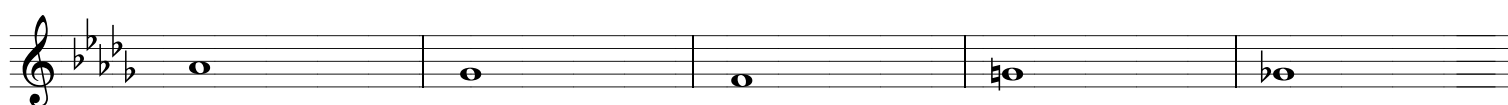
126



131



136



141

